

ASSEMBLY INSTRUCTION



Type no.

:

S No.

:

Vehicle model :

Max. load :

:

 kg

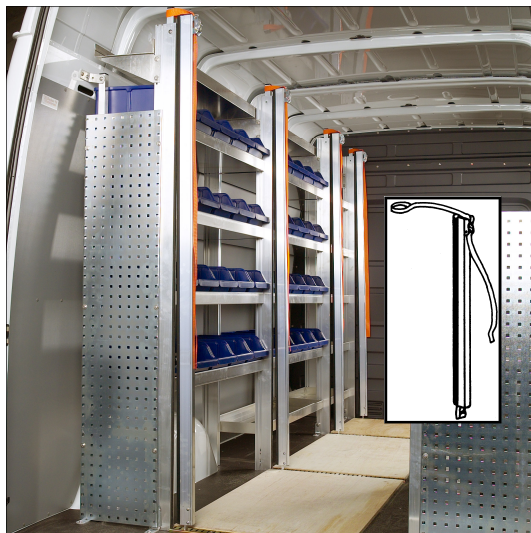
Control :

:

Date :

:

TEKIMEX PRODUCTS



Interior racking



Tekimex ApS
Baldersbuen 21
DK-2640 Hedehusene

Tlf. +45 28 87 90 21

tekimex@tekimex.com

www.tekimex.com

Table of contents

Subject	Page
Assemble instruction for box vans and flat trucks (type 1, type 2 and type 5)	3
Figures showing assembling of the racks	4
Mounting on box vans and flat trucks (type 1, type 2 and type 5)	5
Glass Sheet Retaining System / Change of wheels system	6
Mounting pictures of roof rack	7
Assemble instruction for roof rack with spare parts no.	8
Mounting pictures of ladder fitting	9
Assemble instruction for ladder fitting with spare parts no.	10
Spare parts for type 1 und type 2	11
Spare parts for type 5	12
Spare parts for type 6	13
Spare parts for type 62	14
Spare parts list with reference no.	15 -17
Safety	18

For box vans and flat trucks, (type 1, type 2 and type 5)

1. The vertical frames and the horizontal spacer bars are consecutively numbered - **starting from the rear in the direction of travel, fig. 1**
2. Screw all the stays (15) - fig.2 – on to the frame no.1 **(the stamped end) remembering the large shim (3).**
3. If the rack is supplied with change of wheel, one or two of the vertical frames are provided with 2 threaded holes, fig. 3 and fig. 4. These frames must be placed one on each side of the rear wheel.
4. When all frames and spacer bars have been assembled in numerical order, fig. 5 and 6, bolt the rack together with nuts M10 (12) **remembering the large shim (3)**
5. Insert the cover sheet (4) fig. 6.
6. Assemble the bottom rail (56), fig. 7.
7. Tilt the bottom rail in place and fasten it, fig. 7.
8. Fasten the stop plate (9) in the lowest vertically stay with nut (12) and fasten it to the frame through the bottom rail with bolt (13)
9. Assemble holder for top rail (11) with bolt (33 and 34) with nut (35) fig. 8.
10. Assemble the top rail (11) with bolt (13) fig. 8

Please refer to current regulations concerning the mounting of glass racks on vans and trucks.

Please see page 11-17 with spare parts reference no. for more details

Fig. 1

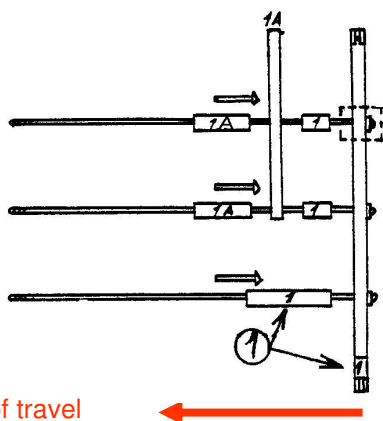


Fig. 2

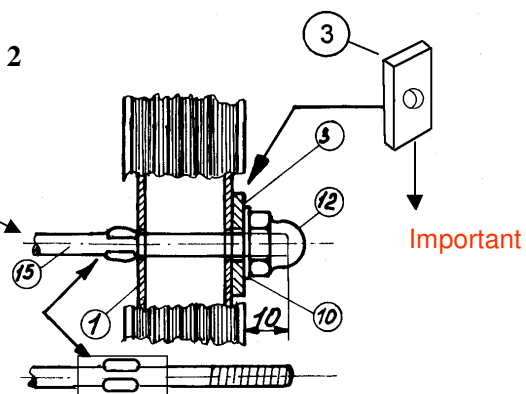


Fig. 3

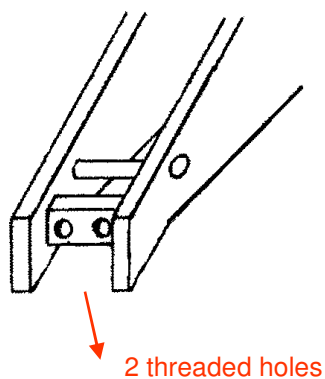


Fig. 4

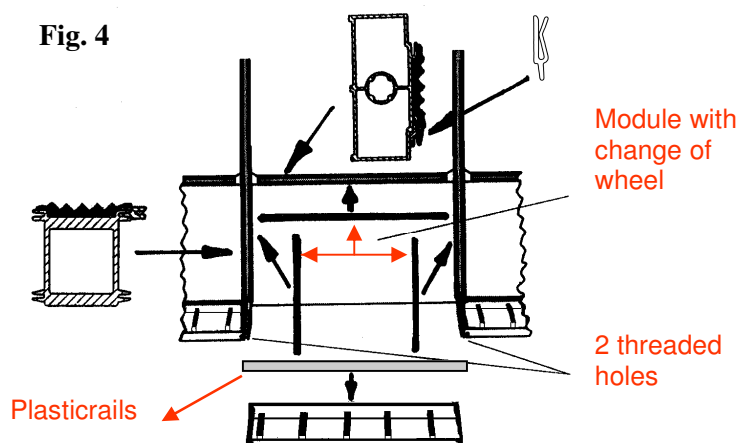


Fig. 5

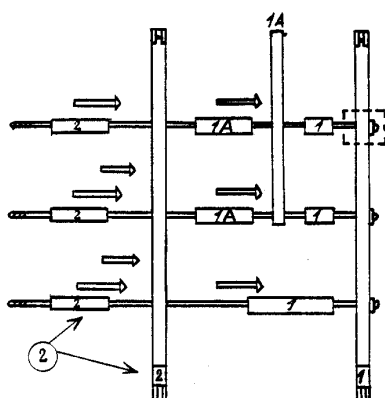


Fig. 6

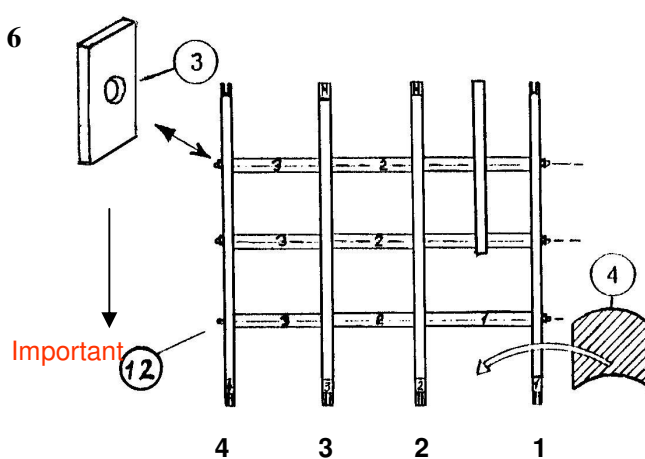


Fig. 7

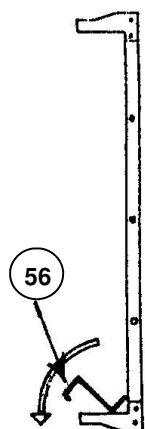
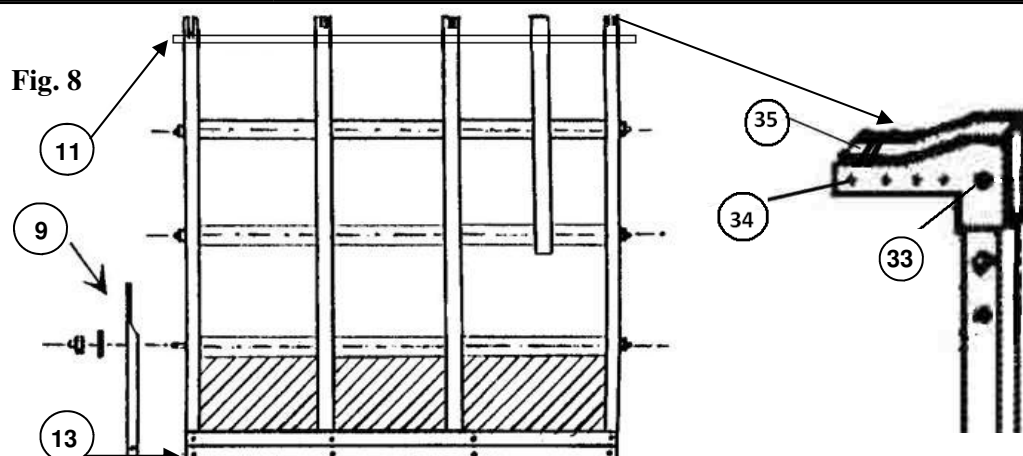


Fig. 8



Mounting instructions

Please see enclosed separate A4 sheet instruction for mounting of both top and bottom mounting fittings for your particular type of van.

Mounting on box van with roof rack, type 5

1. Mount the 2 top fittings (209) on the roof (see page 8)
2. Then mount the traverse bar (220)
3. The complete assembled rack mounts on traverse bar (220)
4. Mount the square tubes (219) on the opposite side of the rack and then the tubes (203)

Mounting on box van with drip moulding or side fitting with special rail, type 5

1. After mounting the top fittings on the rack, then fit the long flat rail (62), fig. 9, which is places in the drip moulding.
2. Suspend the rack in the drip moulding fig. 9 and tighten the top and bottom fixtures.

Please note: If a clamping fixture is used at the bottom, **the metal edge under the van must not point straight down. If it does, bent it with a suitable tool fig. 10, item 3.**

Fig. 9

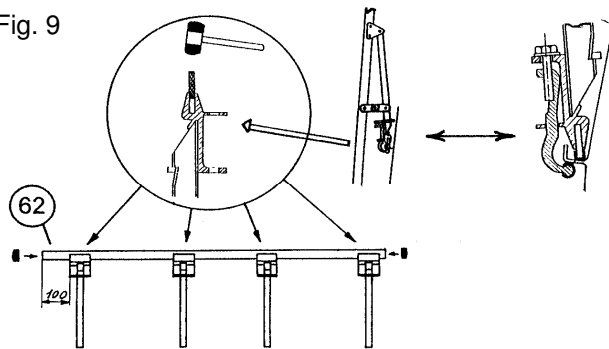
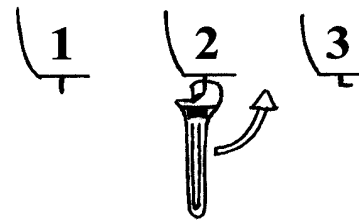


Fig. 10

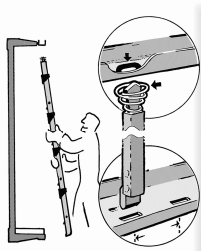


Mounting on flat trucks and double cabins type 5.1, type 5.2, type 2 and type 1

1. Place the assembled rack on the platform and align it. **Make sure before drilling, that the mounting is feasible and that the frames are not obstructing petrol cab, tailboard, chains etc.**
2. **Drill the holes and bolt at the first and the last frame.** Any curving of the rack can be corrected now. Then mount the remaining frames to the platform.
3. If mounting to a vehicle with double cabin, mount 1 or 2 frames to the double cabin like mounting to a van.

Please refer to current regulations concerning the mounting of glass transportation racks on vans and trucks.

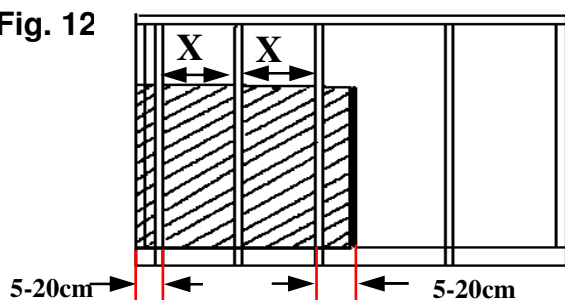
Fig. 11



Mounting the retaining bar

1. Place the retaining bar in the holes of the top rail
2. Now lightly pull the retaining bar and place it in the corresponding holes in the bottom rail (**fig. 1**)

Fig. 12



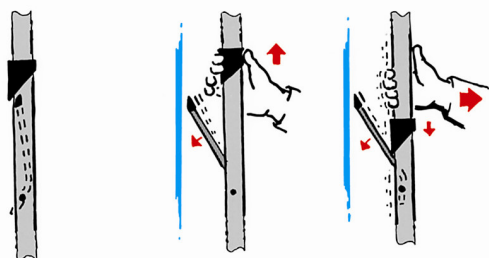
Placement of the retaining bar

X = max. distance between the retaining bars

Rack height	Distance
200-260 cm	x = 900 mm
290 cm	x = 750 mm
320 cm	x = 600 mm

Max. 5-20 cm from glass edge retaining bar

Fig. 13



Handling the retaining bar

1. Pull upwards in the lock on the retaining bar
2. The arms drop out
3. The locks move down and lock the arms (**fig.13**)
4. Slightly pull outwards in the retaining bar and the glass is locked for safe transport
5. Allow you to transport glass in various thickness (**fig.15**)
6. To unlock the glass: Lightly pull the retaining bar outward with one hand, (as shown with arrow **A** **fig. 16**) while lifting upwards in the lock with the other hand (**B**). (**fig.16**)
7. The arm can now be placed in park position inside the retaining bar.

Fig. 14

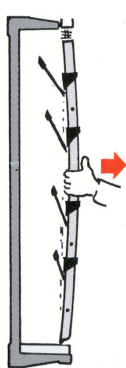
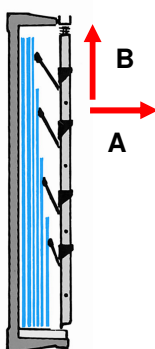


Fig. 15



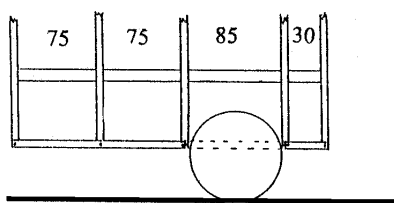
Fig. 16



2 different change of wheels systems

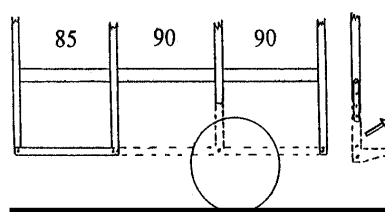
System 1

$$L = 269 (75 + 75 + 85 + 30) :$$



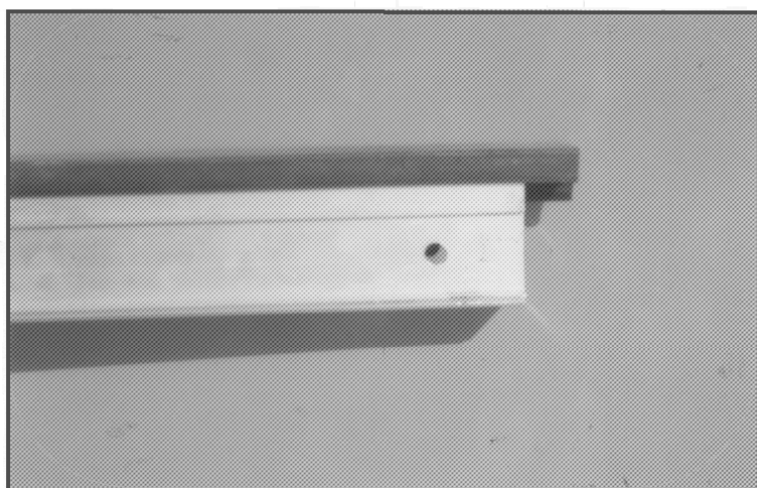
System 2

$$L = 269 (85 + 90 + 90) :$$



Advanced system 2: the rack looks nicer as all the modules more or less have the same measurements. At the same time System 2 has the fewest number of modules, which lowers its price.

Mounting of the roof rack



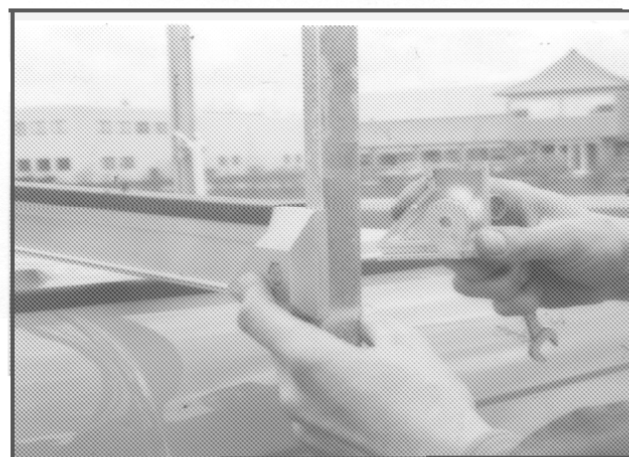
A



B



C



D

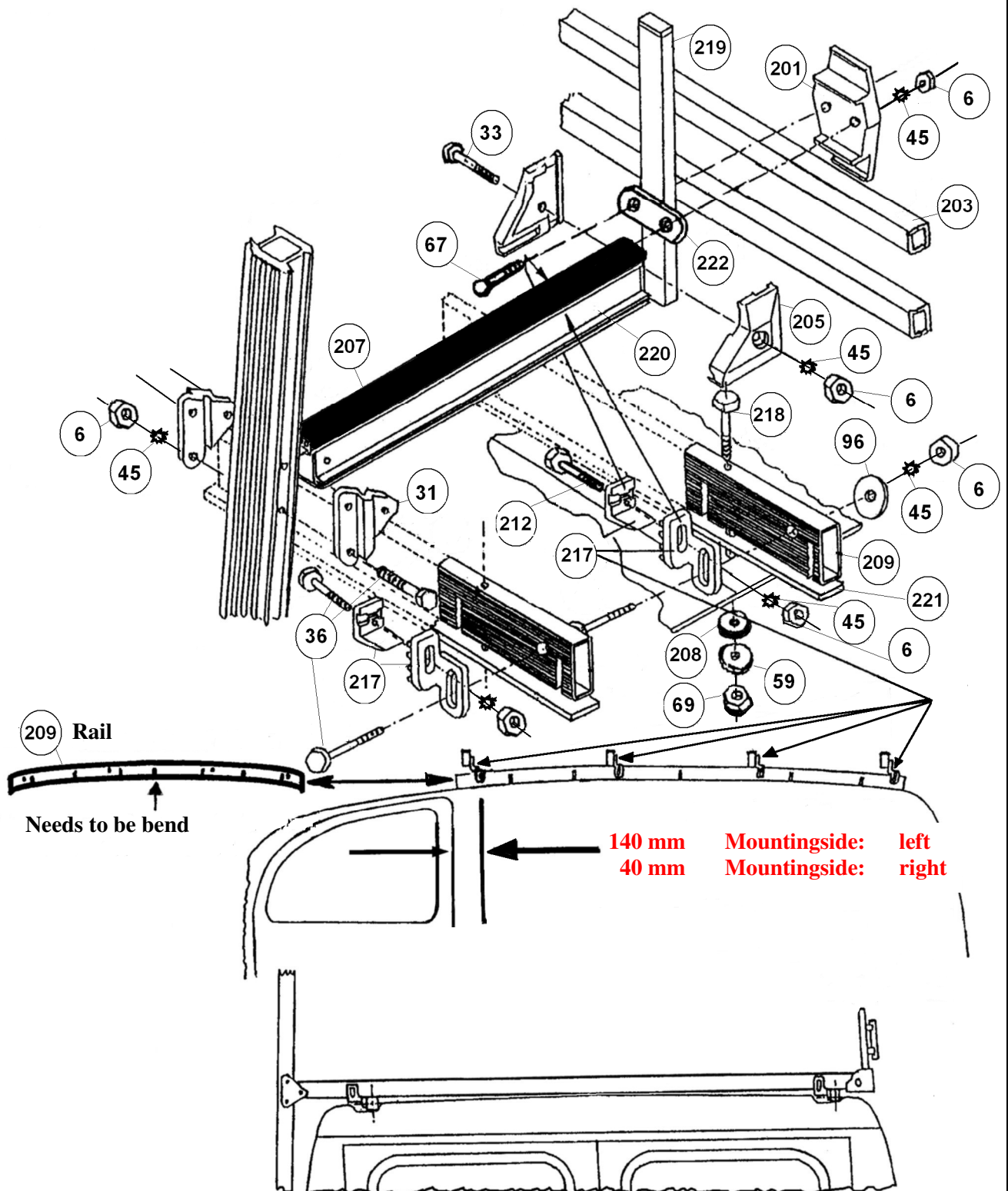


E



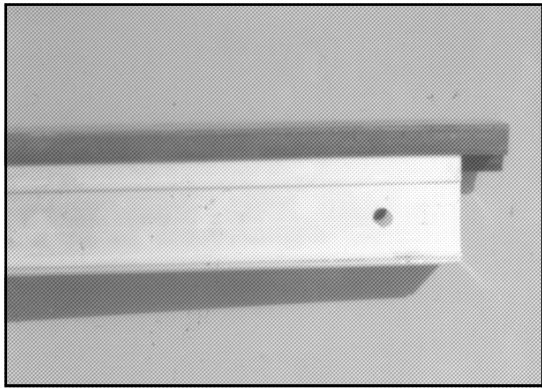
F

Assemble instruction for roof rack with spare parts no.

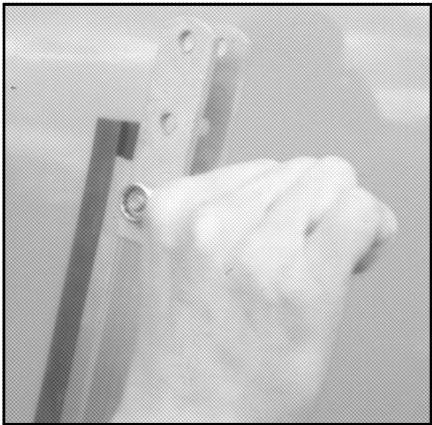


Mounting of the ladder fitting

English



A



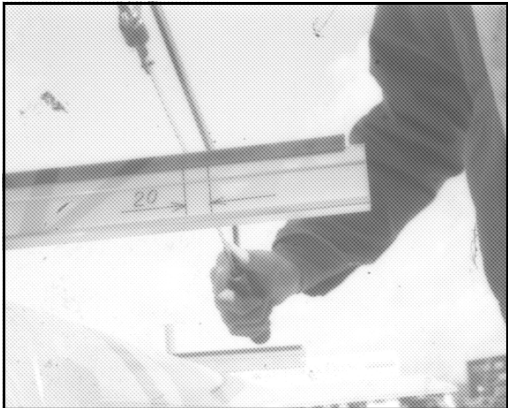
B



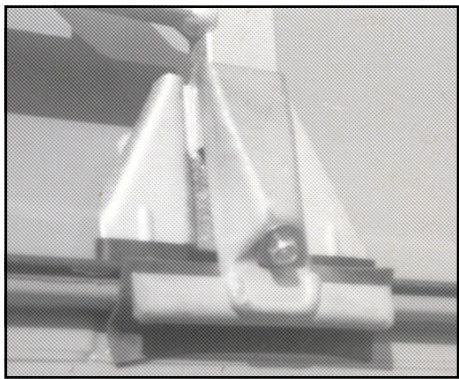
C



D



E



F



G



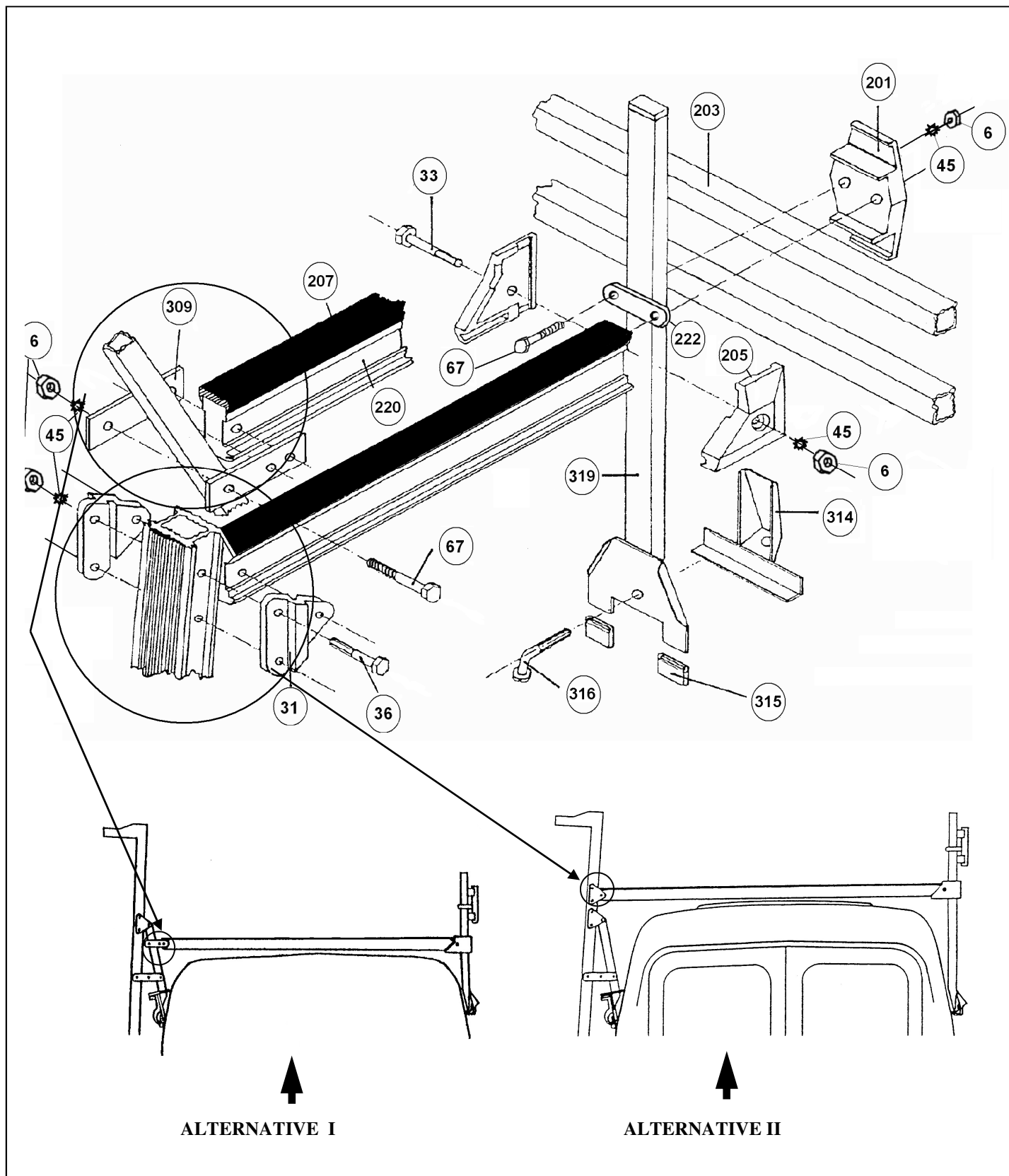
H



I

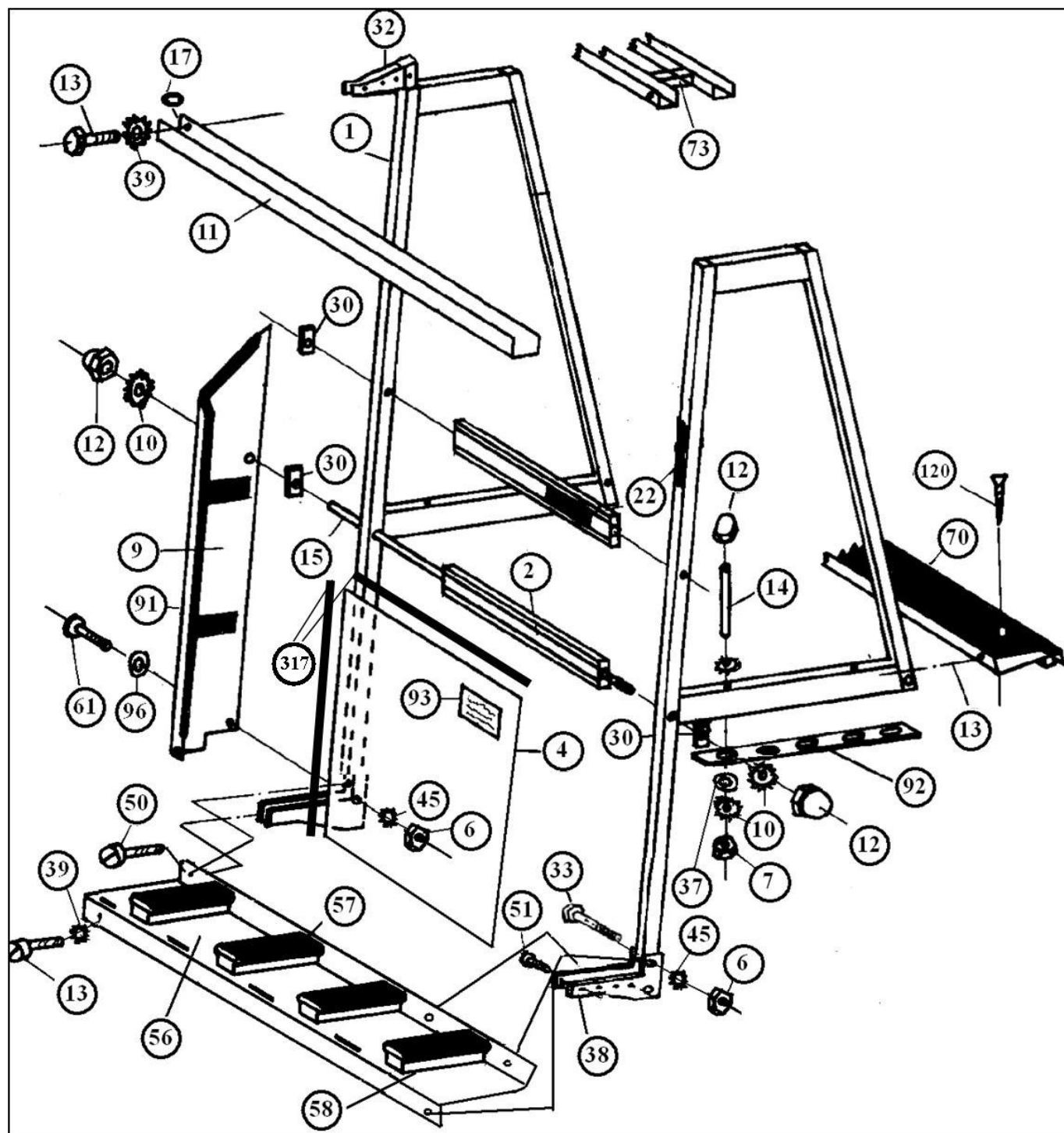


J

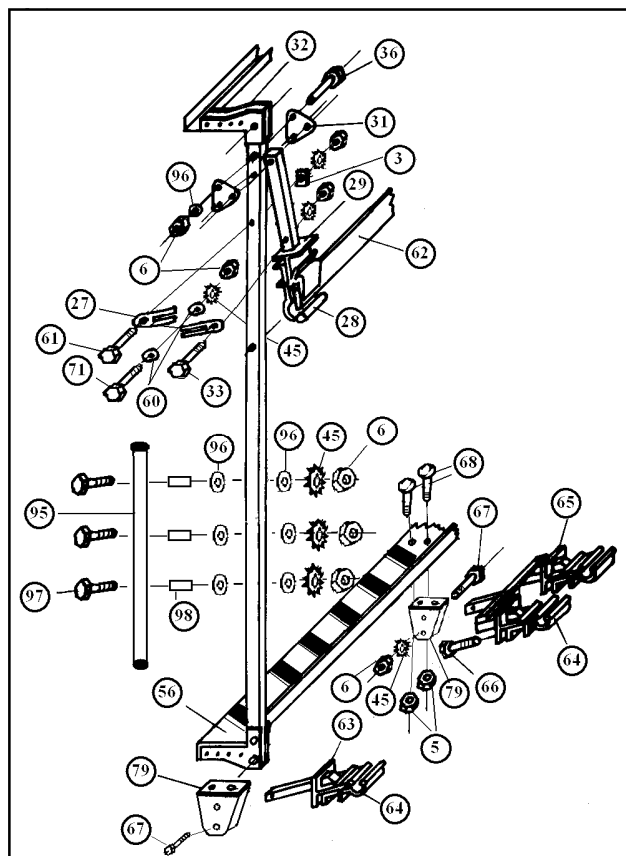
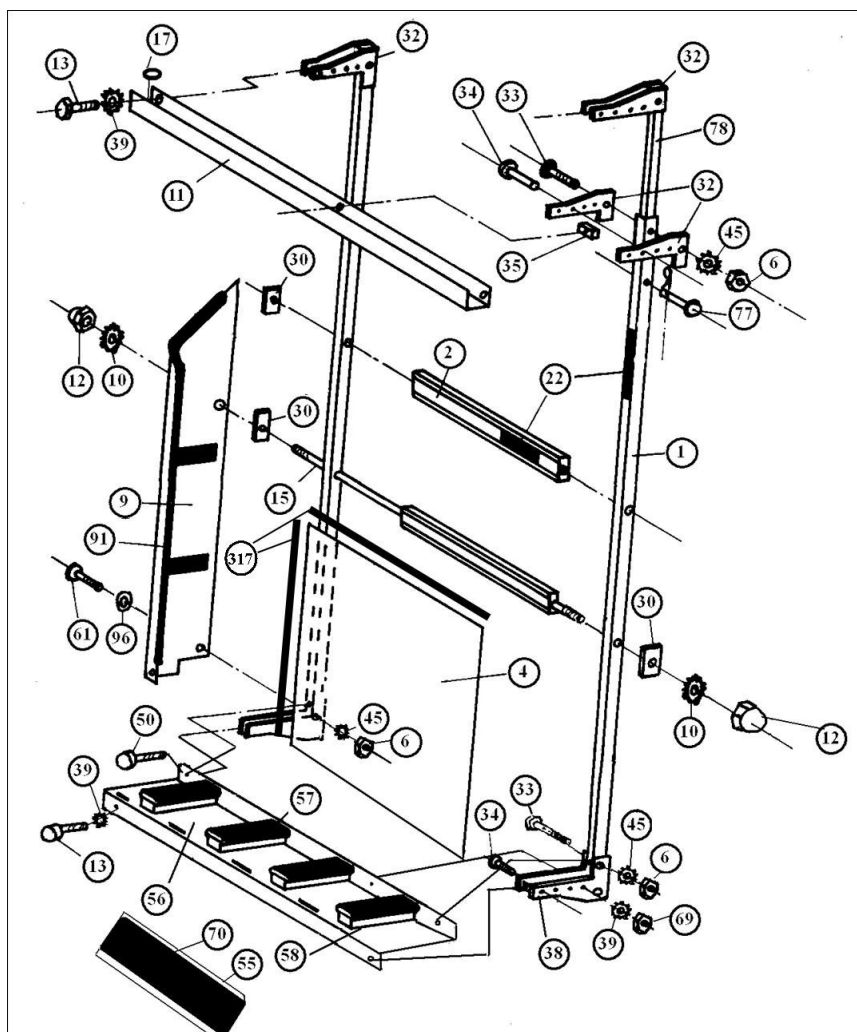
Mounting instruction for ladder fitting with spare parts no.

Spare parts no.

TYPE 1 + 2

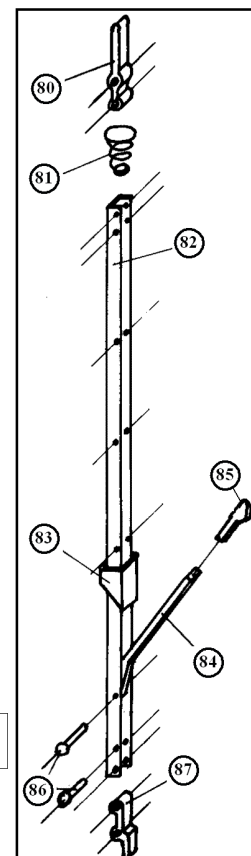


TYPE 5



Roof support

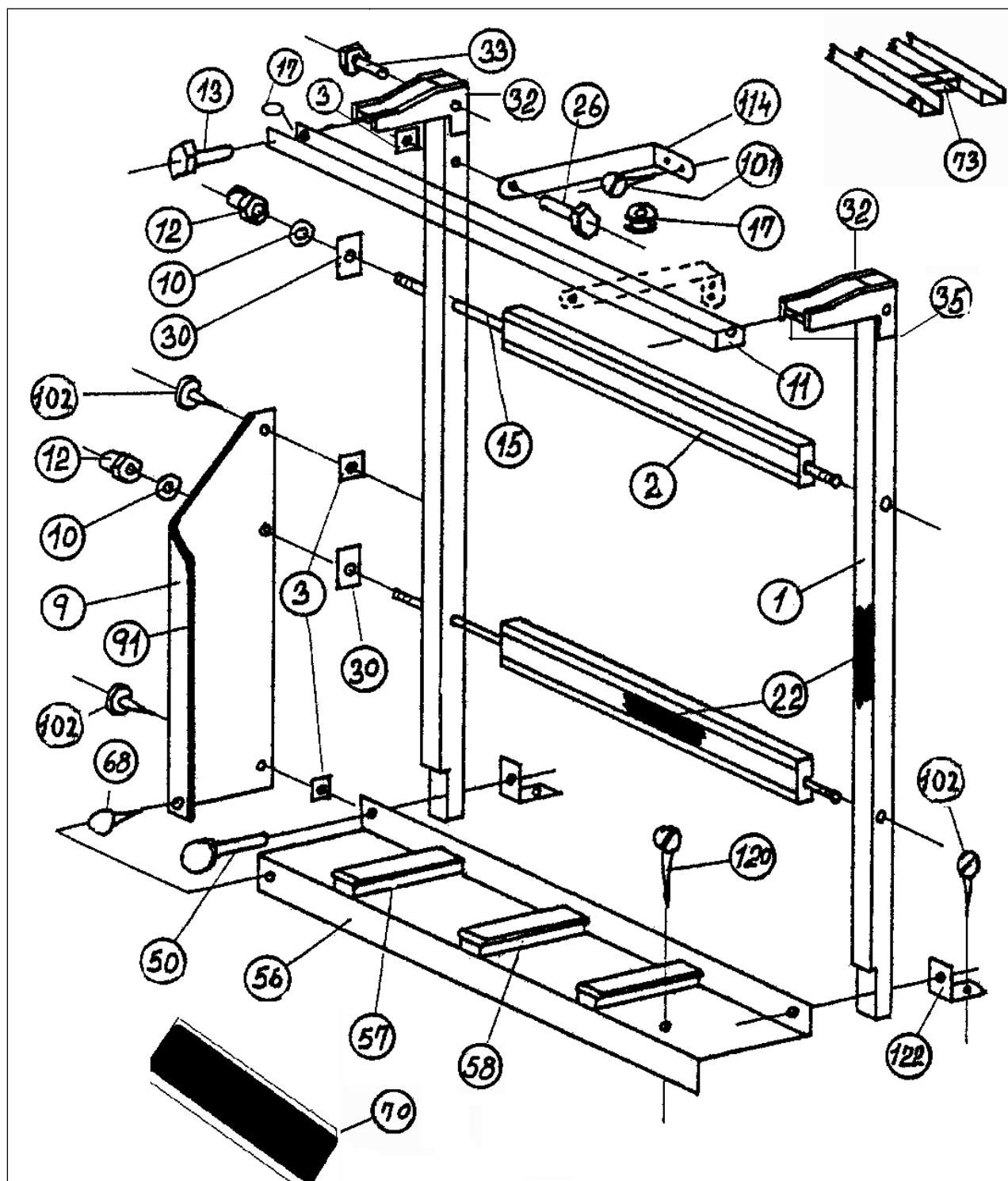
Retaining bar



Interior racks for boks vans

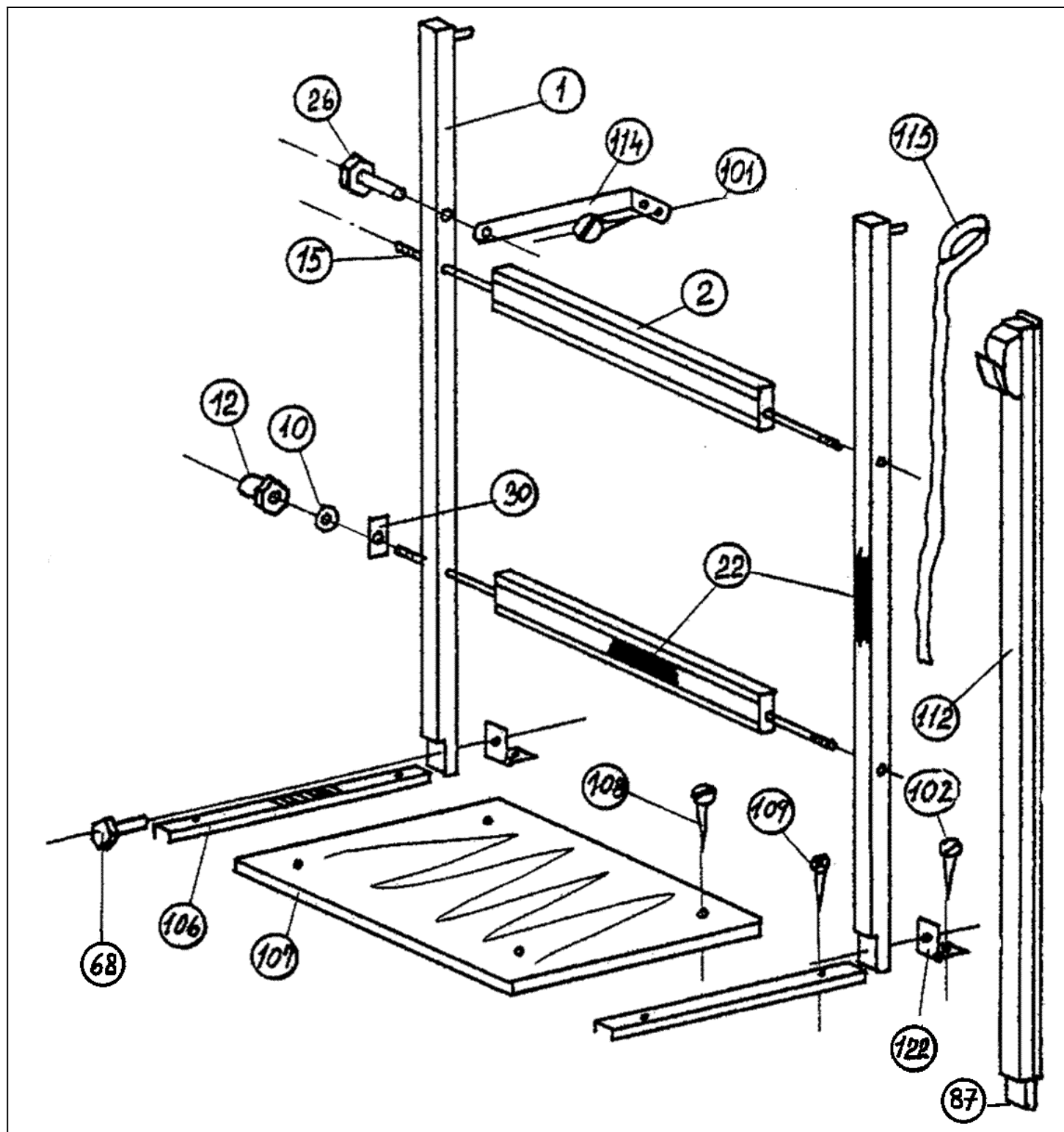
Spare parts no.

Type 6



Spare parts no.

Type 62



No.	Spareparts	
1-1-165	FRAME TYPE 1	H = 165 cm
1-1-195	FRAME TYPE 1	H = 195 cm
1-1-225	FRAME TYPE 1	H = 225 cm
1-1-255	FRAME TYPE 1	H = 255 cm
1-2-165	FRAME TYPE 2	H = 165 cm
1-2-195	FRAME TYPE 2	H = 195 cm
1-2-225	FRAME TYPE 2	H = 225 cm
1-2-255	FRAME TYPE 2	H = 255 cm
1-3-115	FRAME TYPE 3	H = 115 cm
1-3-135	FRAME TYPE 3	H = 135 cm
1-3-165	FRAME TYPE 3	H = 165 cm
1-3-195	FRAME TYPE 3	H = 195 cm
1-4-115	FRAME TYPE 4	H = 115 cm
1-4-135	FRAME TYPE 4	H = 135 cm
1-4-165	FRAME TYPE 4	H = 165 cm
1-4-195	FRAME TYPE 4	H = 195 cm
1-5-165	FRAME TYPE 5	H = 165 cm
1-5-195	FRAME TYPE 5	H = 195 cm
1-5-225	FRAME TYPE 5	H = 225 cm
1-5-255	FRAME TYPE 5	H = 255 cm
1-6-100	FRAME TYPE 6	H = 100 cm
1-6-115	FRAME TYPE 6	H = 115 cm
1-6-135	FRAME TYPE 6	H = 135 cm
1-6-165	FRAME TYPE 6	H = 165 cm
1-62-100	FRAME TYPE 62	H = 100 cm
1-62-115	FRAME TYPE 62	H = 115 cm
1-62-135	FRAME TYPE 62	H = 135 cm
1-62-165	FRAME TYPE 62	H = 165 cm
2-60-90	SPACER BAR	60 - 90 cm
2-100-130	SPACER BAR	100-130 cm
3	SQUARE SHIM	2,5 X 2,5 cm
4	COVER SHEET	60 - 90 cm
5	NUT M6	
6	NUT M8	
7	NUT M10	
8	NUT WICH LOCK M10	
9-55	STOP PLATE, fixed	f = 5,5 cm
9-95	STOP PLATE, fixed	f = 9,5 cm
9-135	STOP PLATE, fixed	f = 13,5 cm
9-20	STOP PLATE, fixed	f = 20 cm
9-25	STOP PLATE, fixed	f = 25 cm
10	STAR WASHER M10	
11	TOP RAIL	
12	NUT M10	
13	BOLT M6 X 20	
14	THREADBAR Nut M10	
15	STAY	
16	BOLT M8 X 90	
17	RUBBER GROMET	
18	BOLT M10 X 90	
19	BOLT M10 X 110	
20	BASE - SINGLE	
21	BASE - DOUBLE	
22	PROFILGUMMI	
23-95	TILTING BOTTOM RAIL	9,5 CM
23-135	TILTING BOTTOM RAIL	13,5 CM
24	SPRING - BOTTOM RAIL	
25	STOP BAR	
26	BOLT M6 X 50	

Spare part list with reference no.

English

Page 2

No.	Spareparts	
27 K	RATCHET ARM WITH SHIM AND BOLT (SET)	27+3+71+61+33+(2x60)+(3x45)+(3x6)
28	CLIP FITTING	
29	ROOF SUPPORT	
30	SQUARE SHIM	
31	TRIANGEL FITTING	
31 K	TRIANGEL FITTING, SET	31+(3x6)+(3x36)+(3x96)
32 K	HOLDER FOR TOP RAIL	32 + 33 + 34 + 35
33	BOLT 8 X 55	
34	BOLT 6 X 60	
35	NUT M6	
36	BOLT M8 X 50	
37	SHIM M10	
38 K	HOLDER FOR BOTOM RAIL(SET)	33 + 33 + 34 + 35 + 38
39	STAR WASHER M6	
40 K	ROOF SUPPORT, complete	27+28+29+31
41	HOLDER FOR RETAINER BAR	
42	BOTTOMBAR	
43	FITTING FOR BOTTOM SUPPORT	
44	TUBE FOR TILTING BOTTOM RAIL	
45	STAR WASHER M8	
46	SPECIEL RAIL - FITTING ON SIDE	
47	SPECIEL RAIL - FITTING ON THE ROOF	
48	RUBBER GROMET	
49	SQUARE SHIM	2 X Ø6
50	BOLT M6 X 45	
51	BOLT M6 X 25	
52	UPPER RETAINER	
53K-55	STOP PLATE REVOLVING 5,5 cm (complet set)	
53K-95	STOP PLATE REVOLVING 9,5 cm (complet set)	48+49+52+53+54
53K-135	STOP PLATE REVOLVING 13,5 cm (complet set)	
53K-20	STOP PLATE REVOLVING 20,0 cm (complet set)	48+49+52+53+54
54	BOTTOM RETAINER	
55	BOTTOM RAIL , DE LUXE	
56-55	BOTTOM RAIL , SUPER	f = 5,5 cm
56-95	BOTTOM RAIL , SUPER	f = 9,5 cm
56-135	BOTTOM RAIL , SUPER	f = 13,5 cm
56-20	BOTTOM RAIL , SUPER	f = 20 cm
56-25	BOTTOM RAIL, SUPER	f = 25
56ex-20	EXTRA WIDTH BOTTOM RAIL 20 CM	
56ex-25	EXTRA WIDTH BOTTOM RAIL 25 CM	
57	RUBBER FOR SUPPORT "SUPER"	
58	SUPPORT, BOTTOM	
59	SHIM M6	
60	SHIM, SPECIEL	
61	BOLT M8 X 65	
62	RAIL	
63	BOTTOM ROOF SUPPORT	
63 K	FITTING FOR BOTTOM RAIL SINGLE COMPLETE	63 + 64 + 79
64	BOTTOM CLIP FITTING	
65	TWO-SIDE ROOF SUPPORT	
65 K	FITTING FOR BOTTOM RAIL, DOUBLE	64 + 65 + 66 + 67 + 79
66	BOLT 8 X 30	
67	BOLT 8 X 45	
68	BOLT 6 X 16	
69	NUT WICH LOCK M6	
70	RUBBER (FOR BOTTOM RAIL DE LUXE)	
71	BOLT M8 X 40	
73	TOP RAIL - double	20 cm, 25 cm
77	BOLT, TELESKOP Ø8	
78 K	TELESCOPE (COMPLETE)	32 + 33 + 34 + 35 + 77 + 78
79	FITTING FOR BOTTOM RAIL	

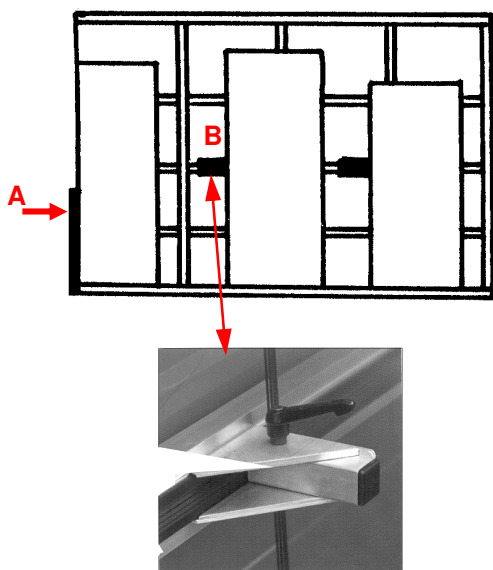
No.	Spareparts	
80	UPPER GRIP	
81	SPRING	
82	RETAINER BAR	
83	LOCK	
84	ARM	
85	NYLON	
86	RIVET 6 x 32	
87	BOTTOM GRIP	
90 K	STOP GUARD (COMPLETE)	
91	BORDERLIST / STOP PLATE	
92	BASE PLATE	
93	TYPEPLATE WITH NUMBER	
94	STRAP	
95	RETAINER FOR STRAP	
95K-1	WINDOWS RETAINING SYSTEM, 1 STROP	
95K-2	WINDOWS RETAINING SYSTEM, 2 STROP	
96	SHIM M8	
97	BOLT 8X100	
98	TUBE	
99	INSERTMODULE	
101	SCREW 6,3 X 16	
102	SCREW 4,2 X 25	
106-62	RAIL TYPE 62	L = 600 mm
107	PLATE	
108	SCREW 4,0, X 4,0	
109	SCREW 4,0 X 35	
112	RETAINER BAR type 62	
114	FITTING	
115	STRAP	
120	SCREW 5,5 X 60	
122	FITTING	
201	PINCH FITTING, LARGE	
203	SQUARE TUBE 20x20	
205	PINCH FITTING, SMALL	
207	RUBBER	
208	RUBBER SHIM	
209	SPECIAL RAIL	
212	BOLT M8x65	
217	FITTING	
218	BOLT M6x80	
219	SQUARE TUBE 30x15	
220	TRAVERSE BAR	
221	RUBBER	
222	FISHPLATE	
309	FISHPLATE FOR LATTER FITTING	
314	CLIP FITTING	
315	RUBBER, SPECIAL	
316	BOLT M6, SPECIAL	
317	PLASTICRAIL FOR COVER SHEET	
319	SHEET FOR ROOF SUPPORT	
319K	SHEET FOR ROOF SUPPORT KOMPLET (314,315,316,319)	
320	TAPE, REFLECTIVE, (1 STOPPLATE), IN FRONT	
321	TAPE, REFLECTIVE, (1 STOPPLATE), IN BAG	
322	LIST TUBE	
400	LATTERFITTINGS	
450	ADAPTER FOR RETAIN ER BAR - TELESKOP	
900	MANUAL	



Your transport rack has been approved by the German safety organisation TÜV.

In most countries, when you have mounted your transport rack, the mounting has to be approved according to the relevant laws of the respective country

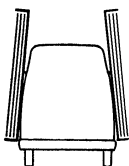
Secure placement of the glass in the rack



1. Place the glass completely up against the fixed stop plate in front (A)
2. When you are transporting stacks of tall and narrow glass sheets, you have to use an extra "safety stop" (B) - extra equipment

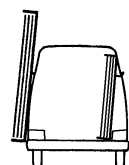
When you load your carrier rack, you have to balance any bias of the load so that the vehicle retains its good driving stability.
You can do so by arranging a counterweight opposite to the carrier rack.
The counterweight may be one of the following:

Fig 1



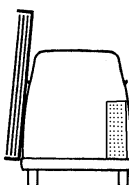
1. An external rack at the opposite side

Fig 2



2. An internal rack at the opposite side

Fig 3

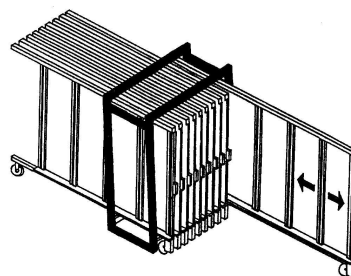
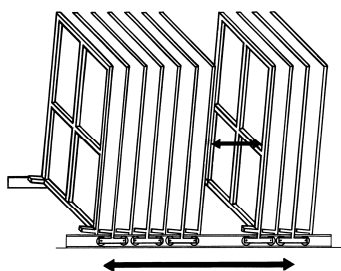


3. A storage system at the opposite side

Other Tekimex products:

Glass storage systems...

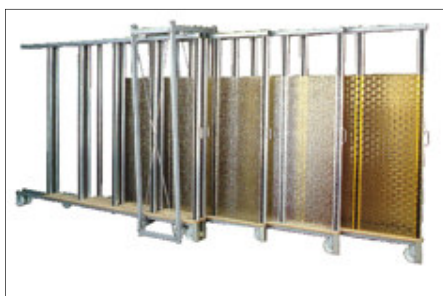
www.tekimex.com



	kg / frame *	glass dimensions
Kompakt	600 kg	188 x 252 cm
Kompakt	1.600 kg	225 x 321 cm
Kompakt	2.700 kg	255 x 355 cm

	kg / frame*	glass dimensions
Minitex	600 kg	140 x 210 to 210 x 252 cm
Mediotex	1.600 kg	165 x 210 to 255 x 355 cm
Maxitex	2.750 kg	225 x 321 to 255 x 355 cm

* TÜV approved



Minitex

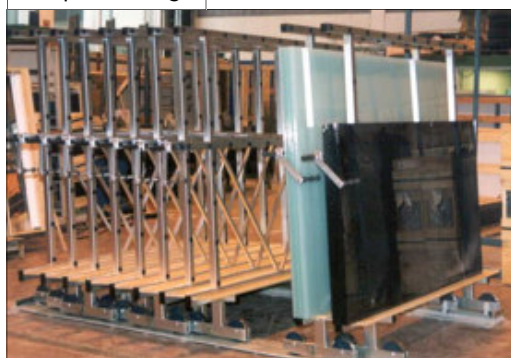


Mediotex



Maxitex

Kompakt 600 kg



Kompakt 1600 kg



Kompakt 2700 kg



Tekimex ApS
Baldersbuen 21
DK-2640 Hedehusene

Tlf. +45 28 87 90 21

tekimex@tekimex.com

Find more information on our website:

www.tekimex.com